



ICI PAKISTAN LTD.

Polyester Business

ICI House 63 Mozang Road
Lahore 54000

T +92 42 3631 1271-81
F +92 42 3630 5670
UAN 111 100 200

www.ici.com.pk

August 06, 2018

The Registrar, NEPRA,
NEPRA Tower,
Attaturk Avenue (East) Sector G-5/1
Islamabad

Subject: **Application for Modification in ICI Pakistan Limited Generation License – 15 MW Coal based Thermal Power Plant**

Dear Sir,

ICI Pakistan Limited (ICIPL) has a 15MW coal based thermal power plant under Generation License No. SGC/122/2017 (Annexure 1).

ICIPL have surplus electrical power of 5MW, which it intends to supply to Nutrico Morinaga (Pvt.) Limited (NML), an associate undertaking. Therefore, we hereby submit this application for License Proposed Modification (LPM) with the following documents as per clause 10 (2) & (3) of NEPRA Licensing (Application and Modification Procedure) Regulations 1999:

- a) Text of proposed modification (Annex – A)
- b) Statement of reasons (Annex – B)
- c) A statement of the impact on the tariff, quality of service and the performance by the licensee of its obligations under the license (Annex – C)
- d) Fee pursuant to LPM vide bank draft 10992369 dated 06-12-18
- e) Board Resolution for submission of LPM (Annex – D)

NML is currently constructing its manufacturing facility at 30-KM Lahore-Sheikhupura Road Sheikhupura, District Sheikhupura (same address as of ICIPL) and will be requiring safe and reliable electrical power to the tune of 5MW for its continuous plant operations (copy of letter of intent enclosed). Here, it needs to be highlighted that the proposed distribution arrangement (to be laid) will have no hindrance/ crossover with the current setup of DISCO distribution network as both the companies share the same boundary wall and the networking arrangement will be on private properties of ICIPL & NML (Annexure 3).



We hereby request your utmost cooperation for early processing of our license modification application for NML.

Suhail A. Khan
Chief Executive
ICI Pakistan Limited

Enclosed:

- Annexure 1 Copy of Generation License
- Annexure 2 Nutrico Morinaga Details
- Annexure 3 Supply of Electricity to Morinaga (layout)
- Annexure 4 Single Line Diagram
- Annexure A Text of proposed modification
- Annexure B Statement of reasons
- Annexure C Statement of the impact on the tariff, quality of service and the performance by the licensee of its obligations under the license
- Annexure D Board Resolution for submission of LPM

Issued by :
 ICI PAKISTAN LTD
 ICI HOUSE.63 MOZANG LAHORE

06 AUG 2018
 Customer Reference: 0000600510060818
 SCB Reference: PK01853Q0003431
 Delivery Method: Pickup by Customer

National Electric Power Regulatory Authority (NEPRA)
 NEPRA BUILDING, ATATURK AVENUE EAST,

Payment Summary:

Gross Amount		238,272.00
Remitting Bank Charges	less	0.00
Withholding Tax	less	0.00
Discount	less	0.00
Net Amount		238,272.00

Dear Sir/Madam,

Standard Chartered Bank (Pakistan) Limited has attached a cheque 10992369 in the amount of PKR **238,272.00 payable to National Electric Power Regulatory Authority (NEPRA) issued by ICI PAKISTAN LTD
 Payment Description:

Document	Your Document	Date	Gr. Amount	PRA/SRB/20%	IT Ded	Net Amount
0001400391	NILL	06/08/2018	238272.00	0.00	0.00	238272.00

Account Payee Only



Straight Through Service-Cash Management, 071, Karachi

P.O.NO : 10992369
 Stationery/Ref No: 5486751

0 6 0 8 1 8

Pay to ****National Electric Power Regulatory Authority (NEPRA)**** Or Order

Rupees ****Two hundred thirty eight thousand two hundred****

PKR ****238,272.00**

**** seventy two and 00/100 Only****

PAYABLE AT ANY BRANCH OF SCB IN PAKISTAN

To: STS PAYS LIP ACCOUNT

A/C # 00-09-9017690-71

Standard Chartered Bank (Pakistan) Limited
 Please do not write below this line.

(Handwritten Signature)
 Signatory PA/Attorney No

**National Electric Power Regulatory Authority
(NEPRA)
Islamabad – Pakistan**

GENERATION LICENCE

No. SGC/122/2017

In exercise of the Powers conferred upon under Section-15 of the Regulation of Generation, Transmission and Distribution of Electric Power Act, 1997, the Authority hereby grants a Generation Licence to:

ICI PAKISTAN LIMITED

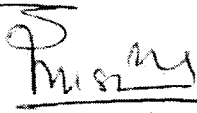
Incorporated under the Companies Act, VII of 1913
Having Incorporation No. SIND 1014 of 1952-1953, dated May 13, 1952
(Now having Corporate Universal Identification No. 0000535)

**for its Imported Coal based Generation Facility/Thermal
Power Plant Located at 30-KM Lahore-Sheikhupura Road,
District Sheikhupura, in the Province of Punjab**

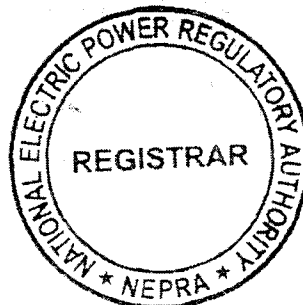
(Installed Capacity: 15.00 MW Gross ISO)

to engage in generation business subject to and in accordance with the Articles of this Licence.

Given under my hand on 20th day of November Two
Thousand & Seventeen and expires on 19th day of
November Two Thousand & Thirty Two.


20 11 17

Registrar



Annexure 2

**Information regarding Network Facts Pertaining to Supply of Power to
Nutrico Morinaga (Pvt) Limited**

Part-A

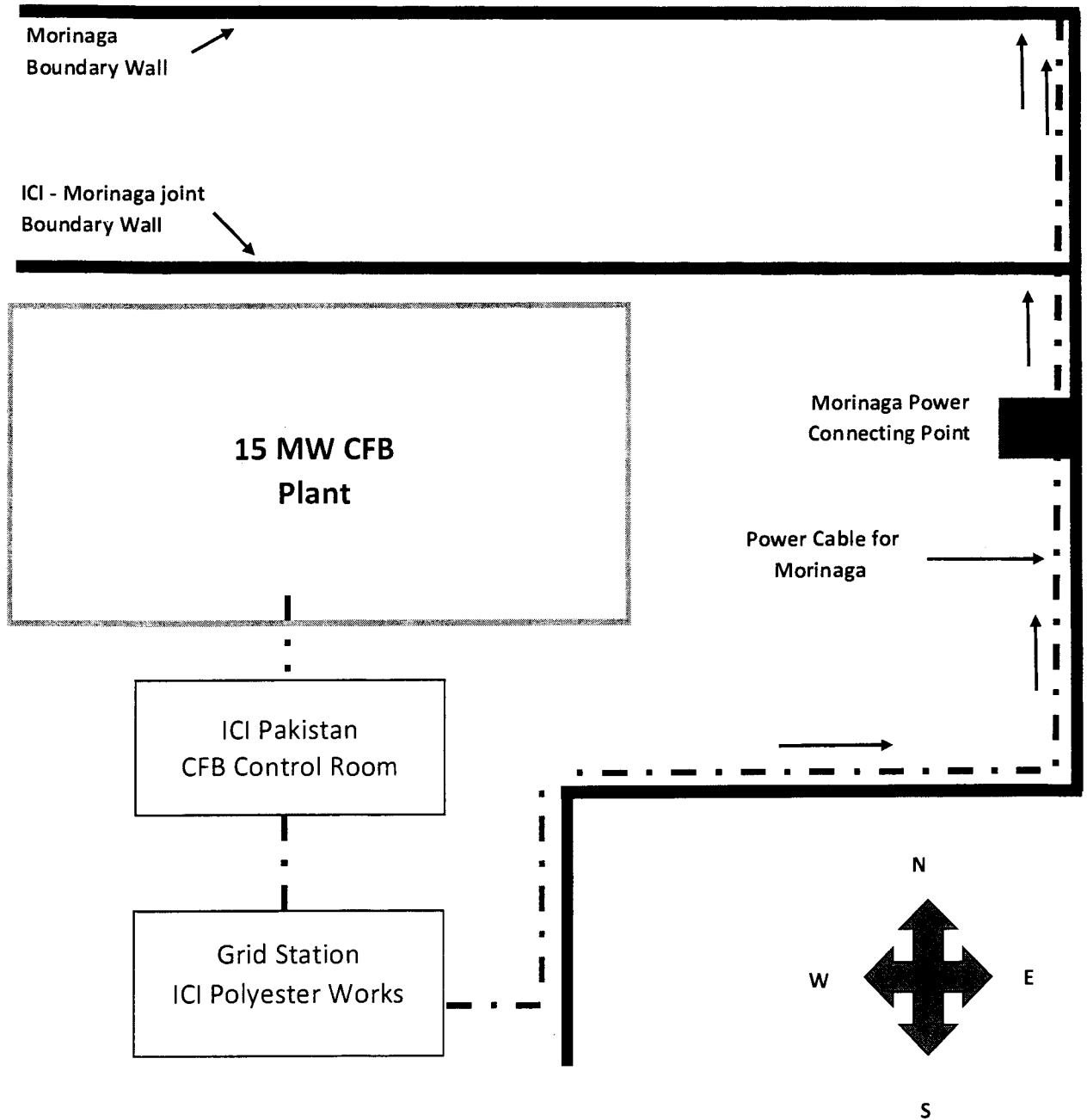
A.	No. of Feeder(s)	One (1)
B.	Length of Each Feeder(s) (Meter)	0.3 km HT from ICI Polyester to Nutrico Morinaga (Pvt) Ltd
C.	Length of Each Feeder to each Consumer(s)	Same as above
D.	In respect of all the Feeders, describe the property (streets, farms, Agri land, etc.) through, under or over which they pass right up to the premises of customer, whether they cross-over or pass near the DISCO lines	- Owned by SPP, Owned by consumer - No overpass of DISCO power lines
E.	Whether owned by ICI Pakistan PowerGen Limited Consumer or LESCO (deal with each Feeder Separately) i. If owned by LESCO, please furnish particulars of contractual arrangement ii. Operation and maintenance responsibility for each feeder	Owned by ICI Pakistan Limited. Operation & maintenance for this feeder is the responsibility of ICI Pakistan Limited
F.	Whether connection with network of LESCO exists (whether active or not)- If yes, provide details of connection arrangements (both technical and contractual)	No, as manufacturing facility of Nutrico Morinaga is under construction phase
G.	Any other network information deemed relevant for disclosure to or consideration by NEPRA.	Both the companies share the same boundary wall, hence networking arrangement will be on private properties of ICIPL & NML

**Information regarding Network Facts Pertaining to Supply of Power to
Nutrico Morinaga (Pvt) Limited**

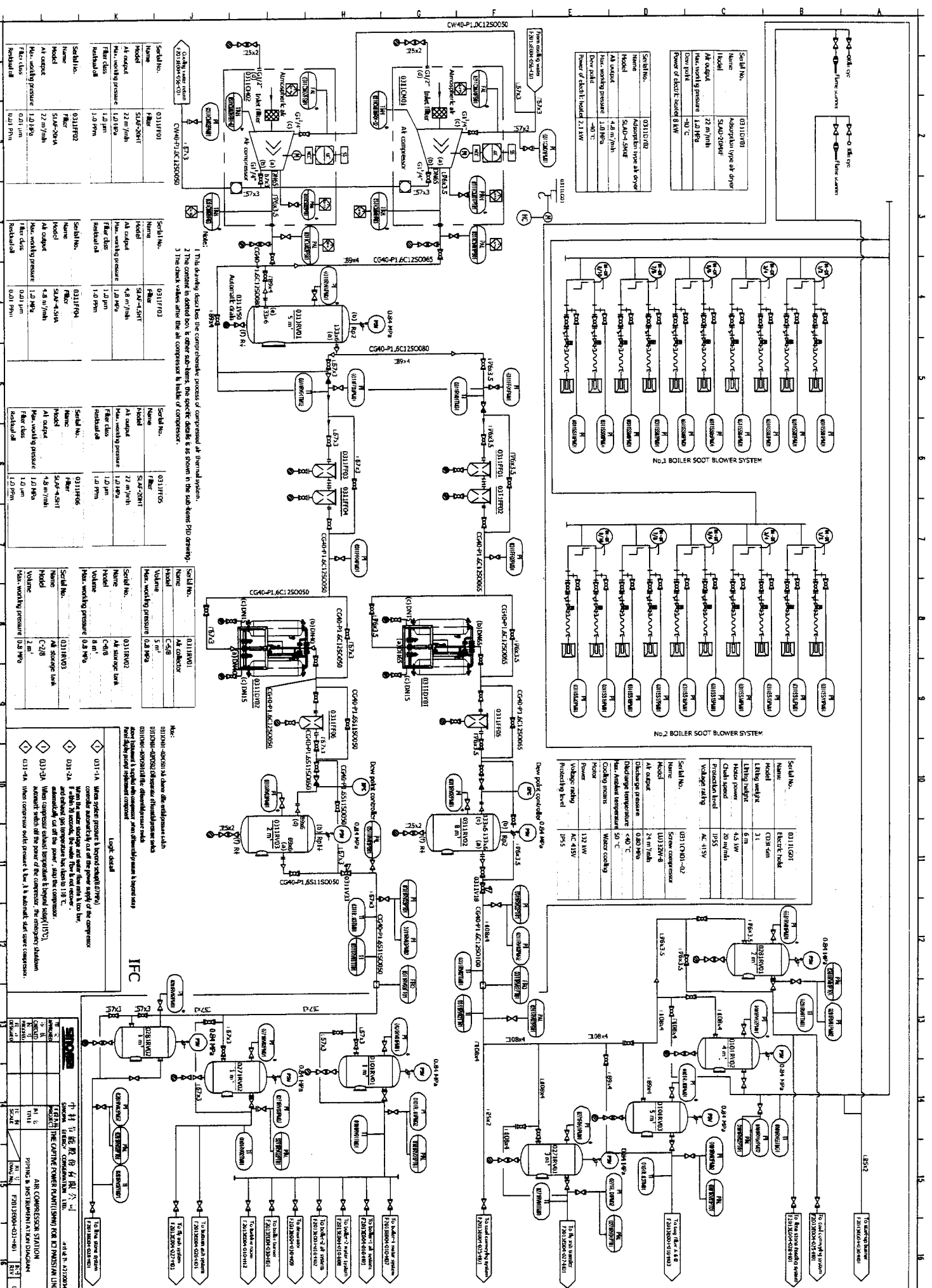
Part-B

A.	No. of Consumers	One (1)
B.	Location of consumers (distance and/or identity of premises)	Nutrico Morinaga (Pvt) Ltd, 30 Km Lahore -Sheikhupura Road, Sheikhupura (same as of ICIPPL)
C.	Contracted Capacity and Load Factor for consumer	~ 5 MW (load factor variable)
D.	Specify Whether i. The consumer is an Associate undertaking of the ICI Pakistan Limited if yes, specify percentage ownership of equity, ii. There are common directorship: iii. Either can exercise influence or control over the other. Specify nature of contractual Relationship i. Between each consumer and ICI Pakistan Limited. ii. Consumer and LESCO	i. Yes. ICI owns 51% equity of NML ii. Yes iii. Yes i. Firm supply of electricity to consumer on a continuous basis ii. None
F.	Any other network information deemed relevant for disclosure to or consideration by NEPRA	Gross Installed Capacity = 15.00 MW De-rated Capacity = 13.50 MW Auxiliary Consumption= 2.50 MW Total Net capacity = 11MW

Area of supply of Electricity to Nutrico Morinaga (Pvt) Limited



Length of cable = 300 METER



Serial No.	0311C01
Name	Adaptation type air dryer
Model	SLAD-2000E
Air output	22 m ³ /min
Max. working pressure	1.0 MPa
Power of electric motor	8 kW

Serial No.	0311C02
Name	Adaptation type air dryer
Model	SLAD-2500E
Air output	4.8 m ³ /min
Max. working pressure	1.0 MPa
Power of electric motor	2.1 kW

Serial No.	0311F01
Name	Filter
Model	SAF-20MT
Air output	22 m ³ /min
Max. working pressure	1.0 MPa
Filter class	1.0 μm
Residual oil	1.0 ppm

Serial No.	0311F03
Name	Filter
Model	SAF-25MT
Air output	4.8 m ³ /min
Max. working pressure	1.0 MPa
Filter class	1.0 μm
Residual oil	1.0 ppm

Serial No.	0311F04
Name	Filter
Model	SAF-25MT
Air output	4.8 m ³ /min
Max. working pressure	1.0 MPa
Filter class	1.0 μm
Residual oil	1.0 ppm

Serial No.	0311F05
Name	Filter
Model	SAF-20MT
Air output	22 m ³ /min
Max. working pressure	1.0 MPa
Filter class	1.0 μm
Residual oil	1.0 ppm

Serial No.	0311F06
Name	Filter
Model	SAF-25MT
Air output	4.8 m ³ /min
Max. working pressure	1.0 MPa
Filter class	1.0 μm
Residual oil	1.0 ppm

Serial No.	0311C01
Name	ELECTRICAL
Model	CSH-500
Lifting weight	3 t
Lifting height	6 m
Rated power	4.5 kW
Rated speed	20 r/min
Protection level	IP55
Voltage rating	AC 415V

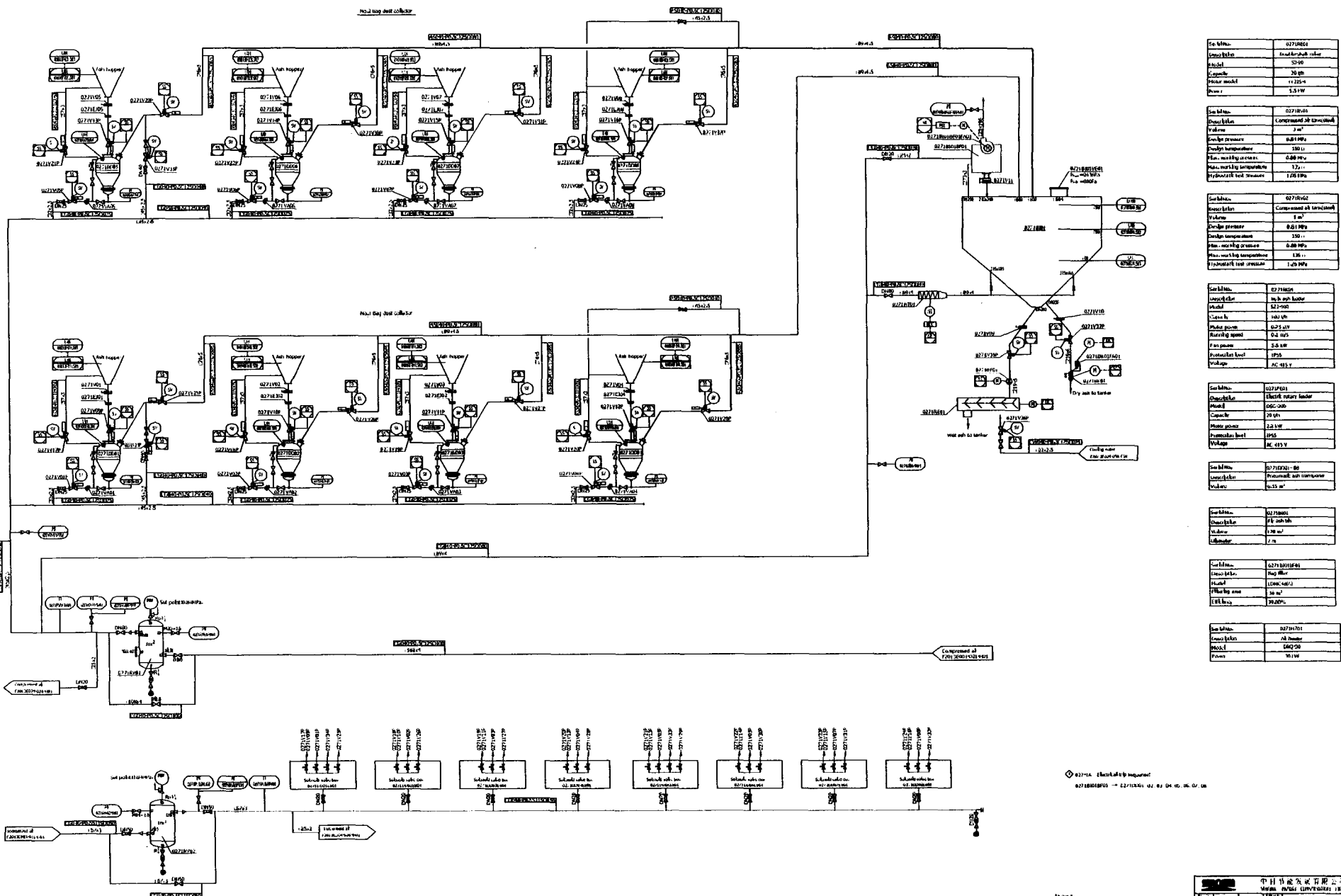
Serial No.	0311C02-02
Name	Screw compressor
Model	LUJ200-8
Air output	2 m ³ /min
Discharge pressure	0.40 MPa
Max. ambient temperature	50 °C
Cooling means	Water cooling
Motor Power	132 kW
Voltage rating	AC 415V
Protecting level	IP55

Note:
 1 The drawing describes the comprehensive process of compressed air thermal system.
 2 The content in defined box is other sub-items, the specific details as shown in the sub items P&ID drawing.
 3 The check valves after the air compressor is hidden of compressor.

Logic detail
 031-1A When system pressure is beyond setting (0.7MPa) compressor automatically cut off the power supply of the compressor.
 031-2A When system pressure is beyond setting (0.7MPa) and the compressor is automatically cut off the power, and the compressor is automatically start of the power of the compressor. The company's situation is not shown in this drawing.
 031-1A When compressor outlet pressure is low, it is automatic start screw compressor.

IFC

中核五福股份有限公司
 NUCHE WUFU COMPANY LIMITED
 AIR COMPRESSOR STATION
 中核五福股份有限公司
 NUCHE WUFU COMPANY LIMITED



- | | |
|-------------|-----------------------|
| Serial No. | 0271001 |
| Description | Master burner igniter |
| Model | 2090 |
| Capacity | 20 amp |
| Motor model | Y225-4 |
| Power | 5.5 kW |
-
- | | |
|--------------------------|---------------------------|
| Serial No. | 0271002 |
| Description | Compressed air compressor |
| Volume | 2 m³ |
| Design pressure | 0.8 MPa |
| Design temperature | 150 ℃ |
| Max. working pressure | 0.86 MPa |
| Max. working temperature | 175 ℃ |
| Hydraulic test pressure | 1.26 MPa |
-
- | | |
|--------------------------|------------------------|
| Serial No. | 0271003 |
| Description | Electric rotary feeder |
| Model | 0271003 |
| Capacity | 180 ton |
| Design pressure | 0.21 MPa |
| Design temperature | 150 ℃ |
| Max. working pressure | 0.26 MPa |
| Max. working temperature | 176 ℃ |
| Hydraulic test pressure | 1.26 MPa |
-
- | | |
|-------------|---------------------|
| Serial No. | 0271004 |
| Description | Pressure air heater |
| Volume | 4.55 m³ |
-
- | | |
|-------------|-------------|
| Serial No. | 0271005 |
| Description | 18V air fan |
| Volume | 1.7 m³ |
-
- | | |
|-------------|--------------|
| Serial No. | 0271006 |
| Description | 1000W heater |
| Model | 1000W-100/1 |
| Capacity | 30 m³ |
| Efficiency | 99.20% |
-
- | | |
|-------------|------------|
| Serial No. | 0271007 |
| Description | Air heater |
| Model | 000700 |
| Power | 911 W |

⊙ 02711A Electrical required
 0271001-007 → 22/110V AC 50 Hz 50, 60, 0, 10

Notes:
 1. All electrical heaters.
 2. To be supplied with equipment.

Serial No.	0101FA01
Description	Primary air fan
Model	9-18M15.2D
Rotate speed	1450 r/min
Flow	13328 m ³ /h
Motor Power (Freq. control)	30000 kW
Rotate speed	2200 r/min
Motor Power (Freq. control)	14500 kW
Voltage	AC 415 V
Protection level	IP55

Serial No.	0101FA02
Description	Secondary air fan
Model	9-18M13.1D
Rotate speed	1450 r/min
Flow	29657 m ³ /h
Motor Power (Freq. Control)	49716 kW
Rotate speed	2450 r/min
Voltage	AC 415 V
Protection level	IP55

Serial No.	0101FA03
Description	Induced draft fan
Model	1160-SI-002-1
Rotate speed	1450 r/min
Flow	10020 m ³ /h
Motor Power (Freq. Control)	250 kW
Rotate speed	1450 r/min
Voltage	AC 415 V
Protection level	IP55

Serial No.	0101V02M
Description	Water supply
Model	F2013E004-010-001
Flow	150 m ³ /h
Motor Power (Freq. Control)	150 kW
Rotate speed	1450 r/min
Voltage	AC 415 V
Protection level	IP55

Serial No.	0101V02M
Description	Water supply
Model	F2013E004-010-001
Flow	150 m ³ /h
Motor Power (Freq. Control)	150 kW
Rotate speed	1450 r/min
Voltage	AC 415 V
Protection level	IP55

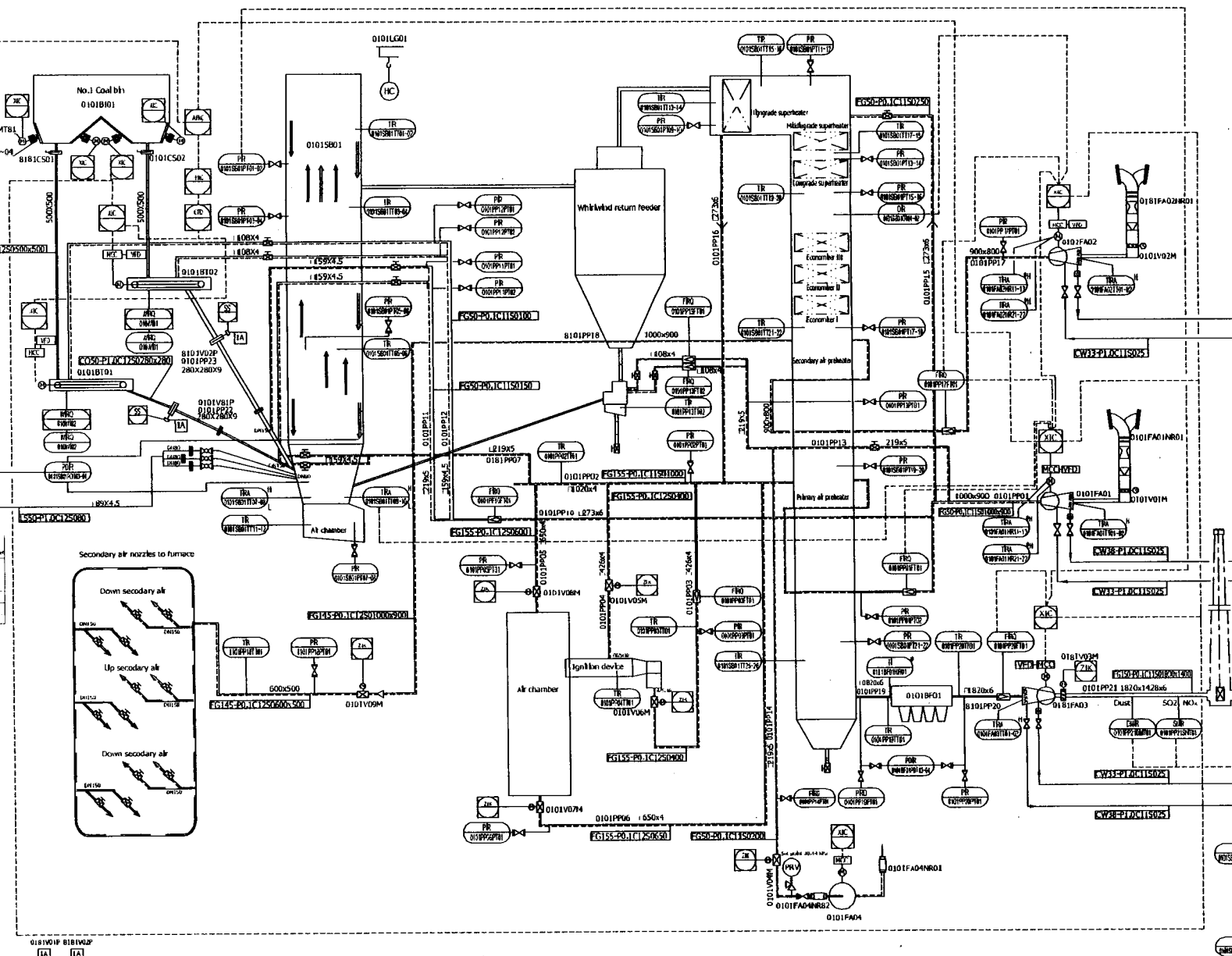
0101S01PT01-02 & differential pressure between and 0101S01PT05-06

Serial No.	0101S001
Description	Coal bin
Model	YG-50x20-04
Rated steam pressure	3.29403 MPa
Rated steam temperature	485.45 °C
Rated steam flow	56 t/h
Feed water temperature	150 °C

0101S01PT01-02 & differential pressure between and 0101S01PT05-06

Serial No.	0101S001
Description	Coal bin
Model	YG-50x20-04
Rated steam pressure	3.29403 MPa
Rated steam temperature	485.45 °C
Rated steam flow	56 t/h
Feed water temperature	150 °C

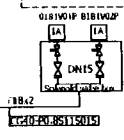
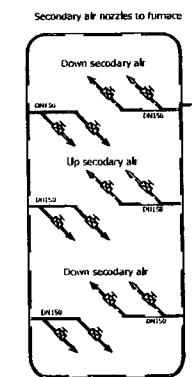
0101S01PT01-02 & differential pressure between and 0101S01PT05-06



Steam pressure control
F2013E004-010-001

Serial No.	0101LGD1
Description	Exhaust hole for ash
Loading capacity	1 t
Lifting motor power	1.5 kW
Handling motor power	0.2 kW
Voltage	AC 415 V
Rotate speed	1380 r/min
Protection level	IP55

Serial No.	0101FA01
Description	Blow blower
Model	FR-200C
Rotate speed	1800 r/min
Flow	1475 m ³ /h
Head	13000 Pa
Motor power	15.1 kW
Rotate speed	1460 r/min
Voltage	AC 415 V
Protection level	IP55



Serial No.	0101S001
Description	Coal bin
Model	YG-50x20-04
Rated steam pressure	3.29403 MPa
Rated steam temperature	485.45 °C
Rated steam flow	56 t/h
Feed water temperature	150 °C

Serial No.	0101S001
Description	Coal bin
Model	YG-50x20-04
Rated steam pressure	3.29403 MPa
Rated steam temperature	485.45 °C
Rated steam flow	56 t/h
Feed water temperature	150 °C

Serial No.	0101S001
Description	Coal bin
Model	YG-50x20-04
Rated steam pressure	3.29403 MPa
Rated steam temperature	485.45 °C
Rated steam flow	56 t/h
Feed water temperature	150 °C

Legend:
 FRC Fuel ratio controller
 AFRC air fuel ratio controller
 CFD Coal fuel divider
 VFD Variable frequency drive
 CMT Coal weight

Electrical trip sequence:
 0101FA03 → 0101FA01 → 0101FA02 → 0101FA04

Coal Feeder-1
 Coal Feeder-2

IFC

Serial No.	0101S001
Description	Coal bin
Model	YG-50x20-04
Rated steam pressure	3.29403 MPa
Rated steam temperature	485.45 °C
Rated steam flow	56 t/h
Feed water temperature	150 °C

0101S01PT01-02 & differential pressure between and 0101S01PT05-06

Serial No.	0101S001
Description	Coal bin
Model	YG-50x20-04
Rated steam pressure	3.29403 MPa
Rated steam temperature	485.45 °C
Rated steam flow	56 t/h
Feed water temperature	150 °C

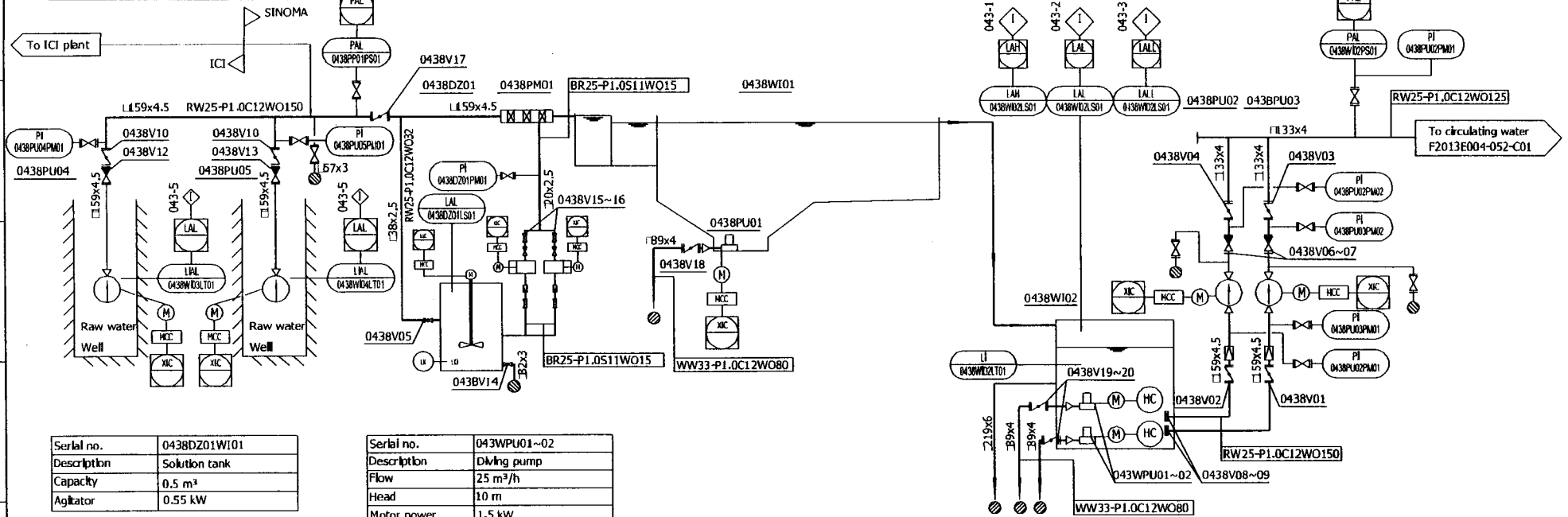
0101S01PT01-02 & differential pressure between and 0101S01PT05-06

Serial no.	0438PU04~05
Description	Deep-well pump
Flow	100 m ³ /h
Head	54 m
Motor power	25 kW
Voltage	AC 415 V
Protection level	IP 68
Model	250QJ100-54

Serial no.	0438PU02~03
Description	Lift pump
Flow	80 m ³ /h
Head	35 m
Motor power	22 kW
Voltage	AC 415 V
Protection level	IP 55
Model	100KWFB100-32

Serial no.	0438W101
Description	Horizontal sedimentation tank
Capacity	120 m ³ /h

Serial no.	0438W102
Description	Impounding pond
Capacity	204 m ³



Serial no.	0438DZ01W101
Description	Solution tank
Capacity	0.5 m ³
Agitator	0.55 kW

Serial no.	0438WPU01~02
Description	Diving pump
Flow	25 m ³ /h
Head	10 m
Motor power	1.5 kW
Voltage	AC 415 V
Protection level	IP 68
Model	50WQ/C241-1.5-R

Serial no.	0438DZ01PU01~02
Description	Dosing pump
Model	JY-0.5
Chemical	Flocculating agent
Motor power	0.37 kW
Protection level	IP 55
Voltage	AC 415 V
Capacity	0-38 L/h

Serial no.	0438PU01
Description	Diving pump
Flow	18 m ³ /h
Head	15 m
Motor power	2.2 kW
Voltage	AC 415 V
Protection level	IP 68
Model	50WQ/C243-2.2-R

Logic detail			
◇ I-043-1	Stop deepwell pumps	◇ I-043-4	Start standby lift pump
◇ I-043-2	Start deepwell pump	◇ I-043-5	Stop deepwell pumps
◇ I-043-3	Stop lift pump	◇ I-043-6	Start standby deepwell pump

Notes

"*" Is supplied with equipment.

IFC

SINOMA		中材节能股份有限公司 SINOMA ENERGY CONSERVATION LTD.		设计证书: A212003453
审批 APPROVED		工程名称 PROJECT	THE CAPTIVE POWER PLANT(15MW) FOR ICI PAKISTAN LIMITED	
审核 CHECKED		图名 TITLE	SUPPLY WATER TREATMENT SYSTEM INSTRUMENT FLOW DIAGRAM	
校对 PROOFED		比例 SCALE	图号 DWG No.	F2013E004-043-C01
设计 DESIGNED			版号 REV	00

Annexure A

TEXT OF THE PROPOSED MODIFICATION

Following changes have been taken place since the last renewal of the generation license:

- Proposed addition of Nutrico Morinaga (Pvt) Limited, as a Bulk Power Consumer as per section 22 of the "Regulation of Generation, Transmission and Distribution of Electric Power Act, 1997"
- Proposed removal of LESCO as a Power purchaser

Annexure B

STATEMENT OF REASONS IN SUPPORT OF THE MODIFICATION

[Regulations 10(2) (b) of the Regulations]

Further, Nutrico Morinaga (Pvt) Limited has agreed to purchase power as Bulk Power Consumer from ICI Pakistan Limited up to 5 MW and will be signing an agreement with ICIPL after necessary regulatory approvals. This arrangement has no hindrance and crossover of DISCO lines.

Annexure C

STATEMENT OF IMPACT ON THE TARIFF

There is no impact on the tariff, quality of service and the performance by the licensee of its obligations under the license [Regulation 10(2) (c) of the Regulation].



ICI PAKISTAN

The Board of Directors
ICI Pakistan Limited
ICI House, 5 West Wharf
Karachi

ICI Pakistan Limited

ICI House, 5 West Wharf,
Karachi 74000

T +92 21 3231 3717-22
F +92 21 3231 1739
UAN 111 100 200

www.ici.com.pk

October 14, 2015

SKK:MB/28/2015

Dear Board Members,

RESOLUTION BY CIRCULATION

You are requested to kindly consider and, if agreed, pass the following Resolution by Circulation:

"APPLICATION FOR GENERATION / TRANSMISSION / SPECIAL PURPOSE TRANSMISSION / DISTRIBUTION/ MODIFICATION OF ANY OF THESE LICENSE(S) WITH NEPRA

WHEREAS, the management of the Company would like to apply to the National Electric Power Regulatory Authority (NEPRA) for Generation / Transmission / Special Purpose Transmission / Distribution / Modification of any of these License(s) of ICI Pakistan Limited in respect of generation, supplying / selling electricity to LESCO and any bulk power consumer / neighboring industries.

IT IS, THEREFORE, RESOLVED that the Board of Directors of ICI Pakistan Limited (herein referred the "Company") hereby approves to file an application for Generation / Transmission / Special Purpose Transmission / Distribution / Modification of any of the License(s) of the Company with the National Electric Power Regulatory Authority ("NEPRA").

FURTHER RESOLVED that the Company be and hereby authorizes Mr. Suhail A Khan, Vice President Polyester & Soda Ash Business of the Company holding CNIC No. 35201-5505256-7, and Mr. Raza Azar (Works Manager, Polyester), holding CNIC No. 35201-3128006-3, to sign jointly or severally the application, negotiate, deposit fees and submit documents/License for Generation / Transmission / Special Purpose Transmission / Distribution / Modification of any of the License(s) of the Company, with NEPRA, and any documentation ancillary thereto, in the matter of supplying electricity to LESCO and any bulk power consumer.



[Handwritten signature]



ICI PAKISTAN

SKK:MB/28/2015

APPLICATION FOR GENERATION / TRANSMISSION / SPECIAL PURPOSE TRANSMISSION / DISTRIBUTION/ MODIFICATION OF ANY OF THESE LICENSE(S) WITH NEPRA

FURTHER RESOLVED that the Company hereby authorizes and empowers Mr. Suhail A Khan and Mr. Raza Azar to jointly or severally to do all acts and things necessary / incidental for the processing, completion and finalization of the application as they may deem fit on behalf of the Company.

FURTHER RESOLVED THAT a certified true copy of this resolution be communicated to whom it may concern and shall remain in force until notice in writing to the contrary be given."

Sincerely,

Saima Kamila Khan
Company Secretary

AGREED

Muhammad Sohail Tabba

Muhammad Ali Tabba

Jawed Yunus Tabba

Amina A Aziz Bawany

Asif Jooma

Muhammad Abid Ganatra

Khawaja Iqbal Hassan

Kamal A Chinoy



NUTRICO MORINAGA

NutriCo Morinaga (Private) Limited

ICI House, 5 West Wharf,
Karachi 74000

T +92 21 3231 3717-22

F +92 21 3231 1739

UAN 111 100 200

M/S ICI Pakistan Limited
32 KM Lahore-Sheikhupura Road,
Sheikhupura,

July 17, 2018

Subject: **Power Purchase Agreement - Letter of Intent**

Dear Syed Atif Ali,

This letter, dated July 17th, 2018, shows the intent of NutriCo Morinaga (Pvt) Limited ('NML') to purchase up to 5 MW of electric power from ICI Pakistan Limited ('ICIPL'), subject to receipt of all requisite approvals and finalization of a Power Purchase Agreement between NML and ICIPL.

Sincerely yours,

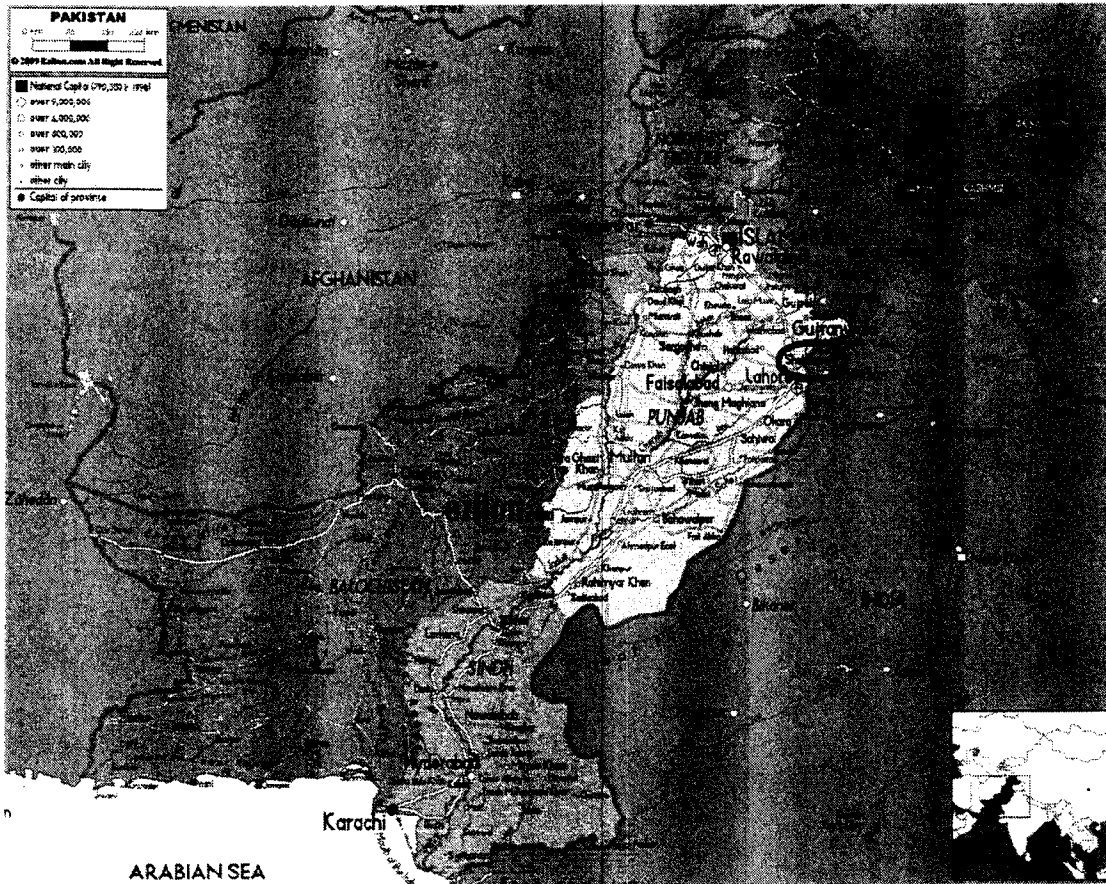
Asif Jooma
Chief Executive
NutriCo Morinaga (Private) Limited

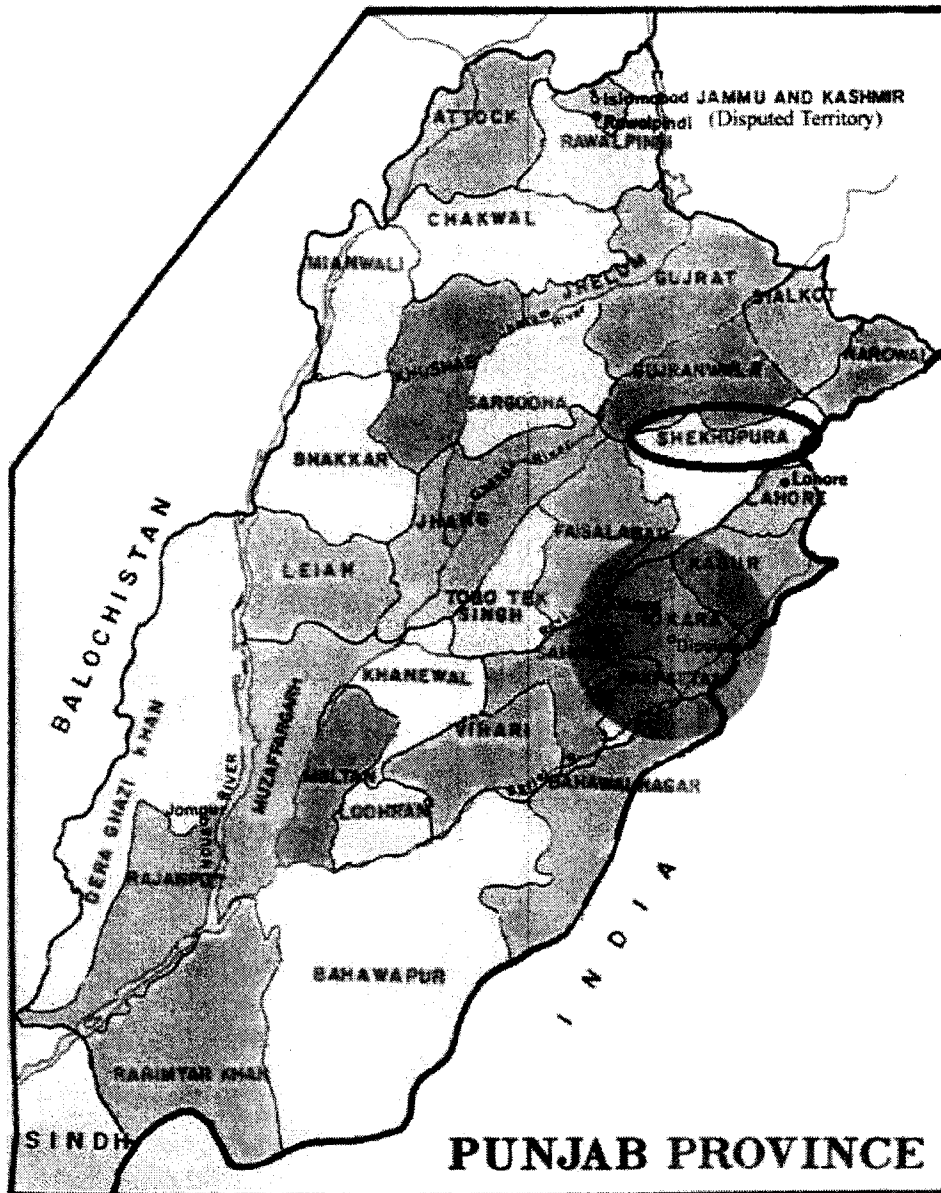
Accepted this 17 day of July, 2018

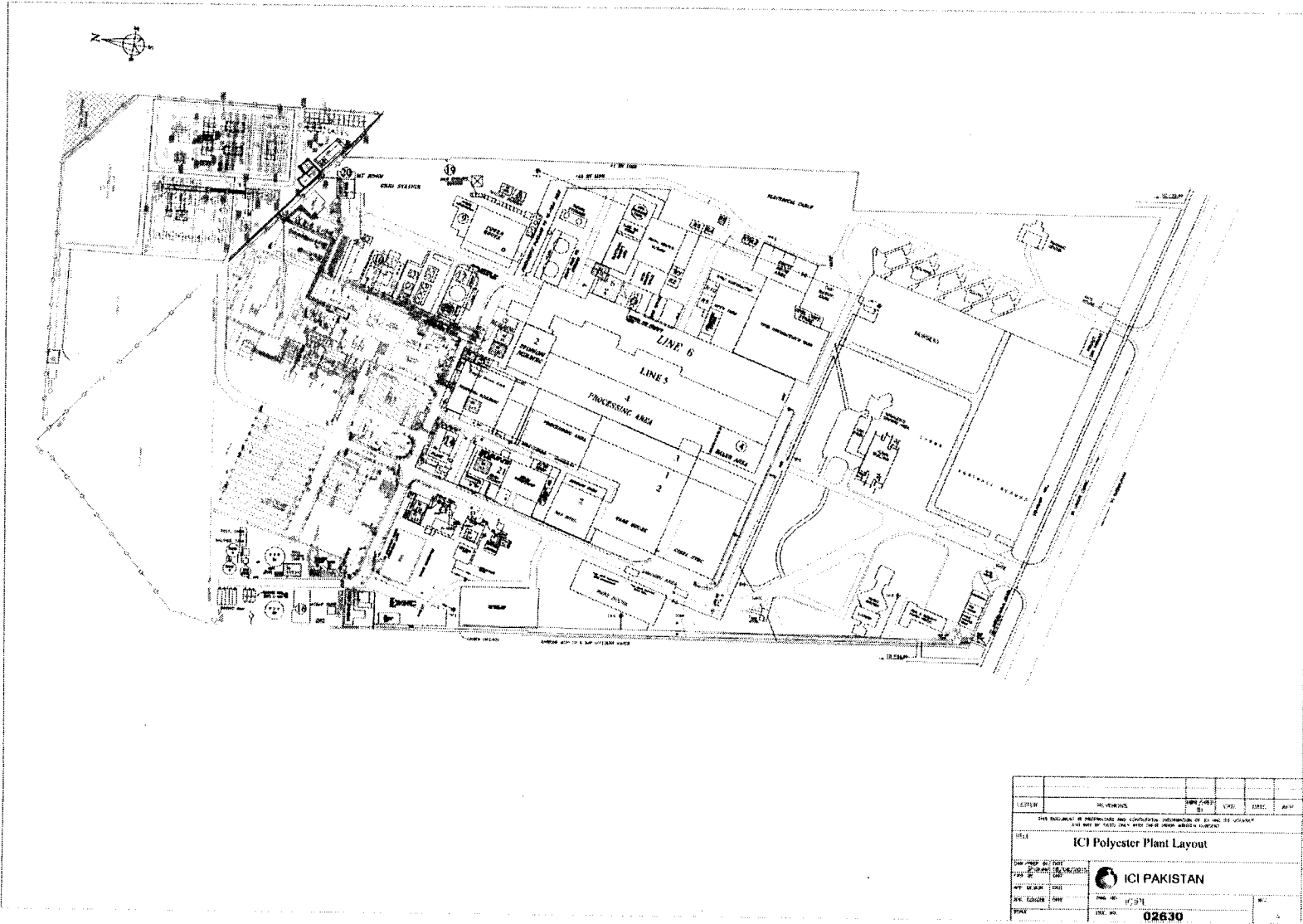
By:
Name: Syed Atif Ali
Designation: Finance Manager, Polyester
ICI Pakistan Limited

SCHEDULE-I

The Location, Size (i.e. Capacity in MW), Type of Technology, Interconnection Arrangements, Technical Limits, Technical/Functional Specifications and other details specific to the Generation Facilities of the Licensee are described in this Schedule.







Detail of Generation Facility/Thermal Power Plant

(A). General Information

(i)	Name of Company/ Licensee	ICI Pakistan Limited
(ii)	Registered Office	ICI Pakistan Limited ICI House, 5 West Wharf, Karachi.
(iii)	Business Office	63 Mozang, Lahore
(iv)	Location of the Generation Facility/ Power Plant	30 Km Lahore Sheikhpura Road, Sheikhpura.
(v)	Type of Generation Facility/ Power Plant	15 MW Coal Fired Power Generation

(B). Configuration of Generation Facility

(i)	Installed Capacity/Size of the Generation Facility/ Power Plant	2 x 50 Ton/hr + 1 x 15 MW	
(ii)	Type of Technology	Circulating fluidized bed, single steam drum water tube boiler & steam turbine	
(iii)	Number of Units/Size (MW)	BOILER	STEAM TURBINE
		2 X 50 Ton / hr	1 x 15 MW
(iv)	Unit Make/Model/Type & Year of Manufacture Etc.	Wuxi Huaguang Boiler Ltd, China. XG-50/5.3M Sub. High temp. and Pressure / 2014	HLTC, Hangzhou Chinen Steam Turbine Power Company Limited. Model: C15-4.9/2.4. Extraction & Condensing Steam Turbine
(v)	COD of the Generation Facility/ Power Plant	June, 2015	
(vi)	Expected Useful Life of the Generation Facility/ Power Plant from COD	15 Years	

(C). Fuel/Raw Material Details

(i)	Primary Fuel	Coal	
(ii)	Start-Up Fuel	Light Diesel Oil (LDO)	
(iii)	Fuel Source for each of the above (i.e. Imported/Indigenous)	Primary Fuel	Startup Fuel
		Coal from South Africa	Indigenous/Imported
(iv)	Fuel Supplier for each of the above	Lucky Commodities	Shell Pakistan/Total
(v)	Supply Arrangement for each of the above fuels	Required capacity to be supplied via train/trucks	Required capacity to be supplied via Oil Tankers.
(vi)	No of Storage Bunkers/Tanks/ Open Yard	One Open Stockyard at Power Plant. Capacity: 6000 T.	One Oil Tank
(vii)	Storage Capacity of each Bunkers/Tanks/ Open Yard	Stockyard Space dry coal shed 1800.	1 x 18000 Ltrs.
(viii)	Gross Storage	7800 T approx	18000 Ltrs.

(D). Emission Values

		Primary Fuel	Start-Up Fuel
(i)	SOX (mg/Nm ³)	<400	As per NEQ's
(ii)	NOx (mg/Nm ³)	<200	---do---
(iii)	CO ₂ %	<20 %	---do---

(E). Cooling System

(i)	Cooling Water Source/Cycle	Ground Water Cycle: Close Cycle Cooling System
-----	----------------------------	---------------------------------------------------

(F). Plant Characteristics

(i)	Generation Voltage	11 kV
(ii)	Frequency	50 Hz
(iii)	Power Factor	0.8 (lagging)-0.95(leading)
(iv)	Automatic Generation Control (AGC) (MW control is the general practice)	Yes

(v)	Ramping Rate (MW/min)	1.5 % of the rated load
(vi)	Time required to Synchronize to Grid	8 to 10 hours for cold start (time considered steam turbine cold start)

(G). Project Cost (Thousand Rs.)

(i)	Equity	Rs. 00.00 million
(ii)	Debt	Rs. 2,450 million
(iii)	Total Project Cost	Rs. 2,450 million

(H). Auxiliary Consumption

(i)	Auxiliary Consumption	2,500 kW
-----	-----------------------	----------

Information Pertaining to the BPC of the Licensee

(i).	Location of the consumer (distance and/or identity of premises)	30-KM, Lahore-Sheikhupura Road, Sheikhupura, in the Province of Punjab	
(ii).	Contracted Capacity and Load Factor of Consumer	5.00 MW/Variable	
(iii).	Specify Whether		
	(a).	The consumer is Associate undertaking of the ICIPPGL-If yes, specify percentage ownership of equity;	Yes, the consumer is Associate undertakings of the ICIPPL with common Directorship. The percentage ownership of equity is 100%
	(b).	There are common directorships	Yes
	(c).	Either can exercise influence or control over the other.	Yes
(iv).	Specify Nature of Contractual Relationship.		
	(a).	Between consumer and ICIPPL.	Buyer and Seller (Firm supply of electricity to the consumer on continuous basis).
	(b).	Consumer and host DISCO.	N/A
(v).	Any Other Network Information deemed Relevant to disclosure to or consideration by NEPRA.	N/A	

Information Pertaining to Distribution Network of the Licensee

A.	No. of Consumers	01		
B.	Location of consumers (distance and/or identity of Premises)	30 KM, Lahore Sheikhpura Road, Sheikhpura.		
C.	Contracted Capacity and Load Factor for consumer	Consumer	Capacity	Load Factor
		Nutrico Morinaga	5 MW	Variable
D.	Specify Whether			
	i) The consumer is an Associated undertaking of the SPP- If yes, specify percentage ownership of equity.	ii) Yes. ICI owns 51% equity of NML		
	iii) There are common directorships:	YES		
	iv) Either can exercise influence or control over the other.	YES		
E.	Specify nature of contractual Relationship			
	i) Between each consumer and SPP.	ii) Firm supply of electricity to consumer on a continuous basis		
	iii) Consumer and host DISCO.	NONE		
F.	Capacity originally sanctioned by Provincial Government- If subsequently enhanced, evidence of permissions for enhancement.	15MW		

SCHEDULE-II

The Installed/ISO Capacity (MW), De-Rated Capacity At Mean Site Conditions (MW), Auxiliary Consumption (MW) and the Net Capacity At Mean Site Conditions (MW) of the Generation Facilities of Licensee is given in this Schedule.

1.	Gross Installed Capacity of the Generation Facility/Power Plant	15.00 MW
2.	De-rated Capacity of the Generation Facility/Power Plant at Reference Site Conditions	13.50 MW
3.	Auxiliary Consumption of the Generation Facility/Power Plant.	2.50 MW
4.	Total Installed Net Capacity of the Generation Facility/Power Plant at Reference Site Conditions.	11.0 MW

Load distribution of 11MW net capacity post finalization of deal with Nutrico Morinaga (Pvt) Limited will be as follows:

ICI Pakistan Limited (In-house Consumption)	6.00MW
Nutrico Morinaga Limited	5.00MW
Surplus	-